

# SPACE PLANS

The regular floorplates utilize a 1.5m module facilitating a highly efficient internal planning module.

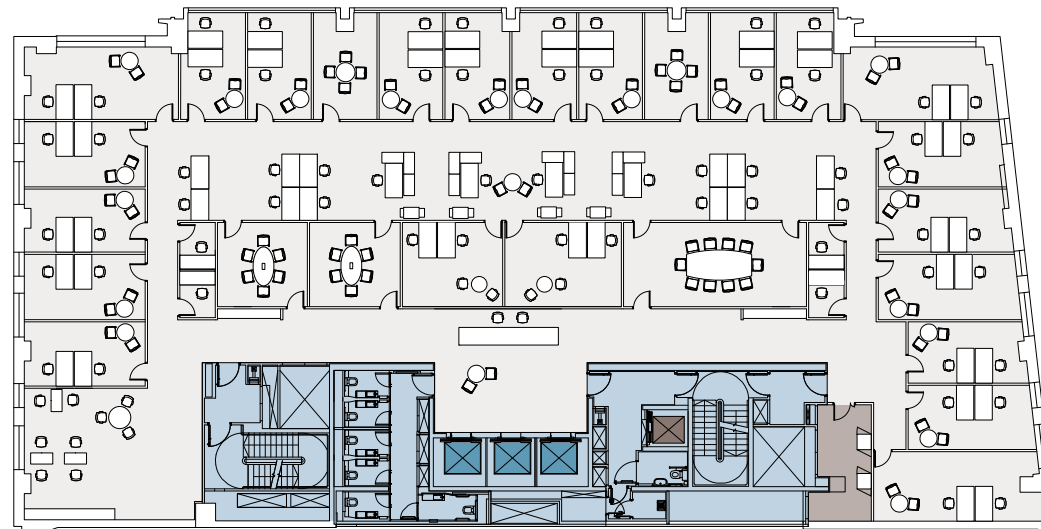
## UK LEGAL TESTFIT - FOURTH FLOOR

NIA	8,849 sq ft	822 sq m
Planning ratio/pers	145 sq ft	13.5 sq m



### UK LEGAL TESTFIT BREAKDOWN

2-person office	22
Open plan desking	16
Reception	1
<b>TOTAL HEADCOUNT</b>	<b>61</b>
10-person meeting room	1
6-person meeting room	2
1-person quiet pods	4
Comms room	1
Breakout	1
Copy/printing area	2



### KEY

Office Space	Core	Fire Lift
Comms	Passenger Lift	

Not to scale. For indicative purposes only.

125  
WOOD STREET  
LONDON EC2